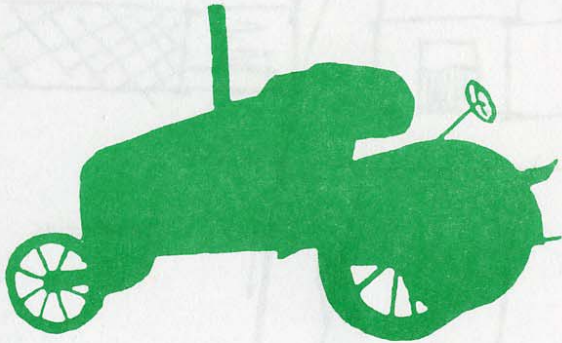


## NORTHFIELD FARM MUSEUM

A unique private collection of historic farm machinery and household implements depicting working and family life on North East farms over the last 100 years.



• TRACTORS •

• STATIONARY ENGINES •

• MOTORBIKES AND BICYCLES •

• RADIOS, WASHING MACHINES ETC. •

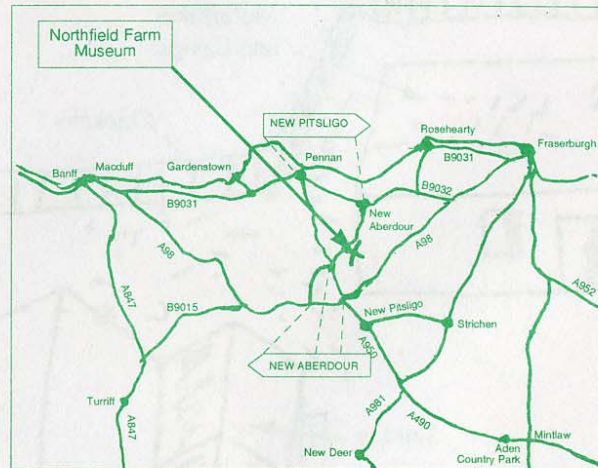
• AVIARY •

• PLOUGHS AND HARVESTERS •

• CARBIDE LAMPS •

• RECONSTRUCTED 19th CENTURY SMIDDY •

## NORTHFIELD FARM MUSEUM



*From B9031 follow road signs to New Pitsligo  
From A98 follow road signs to New Aberdour*

10 miles from Fraserburgh

12 miles from Banff

40 miles from Aberdeen

**Open Daily, May to September  
11.30 a.m. to 5.30 p.m.**

ADMISSION:  
ADULTS £1.50 CHILDREN & O.A.P. 75p

**01771 653504**

PRINTED BY A. J. & D. R. COOPER, FRASERBURGH

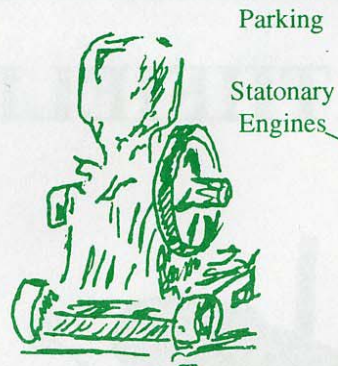
# NORTHFIELD



## FARM MUSEUM

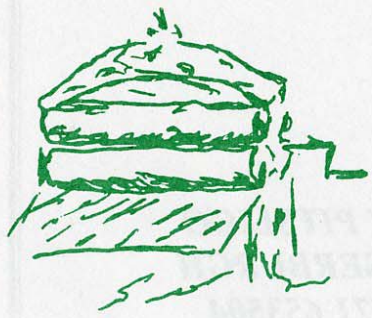


**NEW PITSLIGO  
FRASERBURGH  
01771 653504**

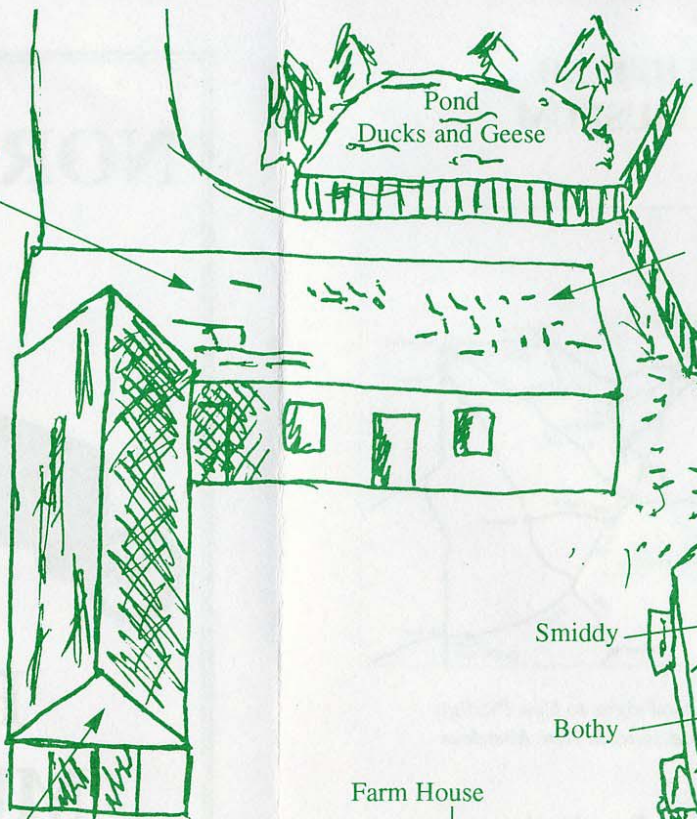


Parking  
Stationary Engines

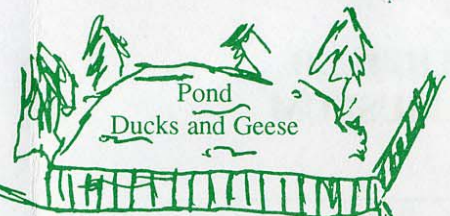
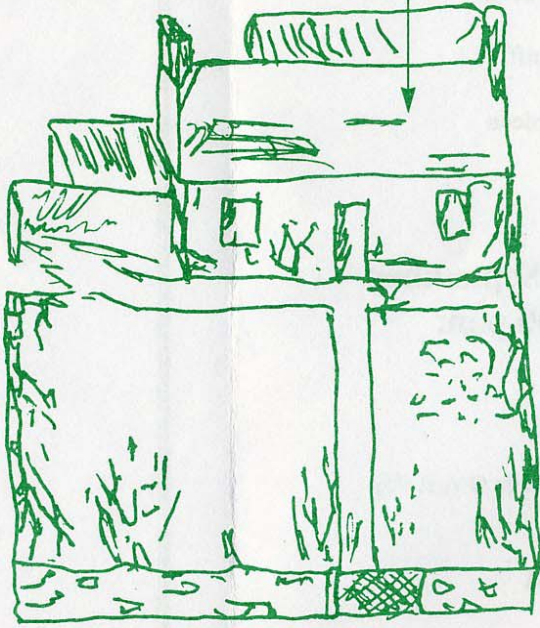
WORK SHOP  
LINE SHAFTING  
RUNNING MOST  
WEEKENDS  
DRIVEN BY  
LISTER ENGINE  
MODEL A. 1923



Household Utensils



Farm House



Pond  
Ducks and Geese

Motorbikes  
and Lamps

Chickens

Smiddy

Bothy

Aviary

Soay Sheep

Implements

Workshop  
(Private)

Toilets

Line Shafting  
Workshop

Stable Block

Paddock

Tractors

